

SHIP REPLACEMENT PROJECT

Construction update: AFBI replacement Research vessel

PHILIP JEFFERS

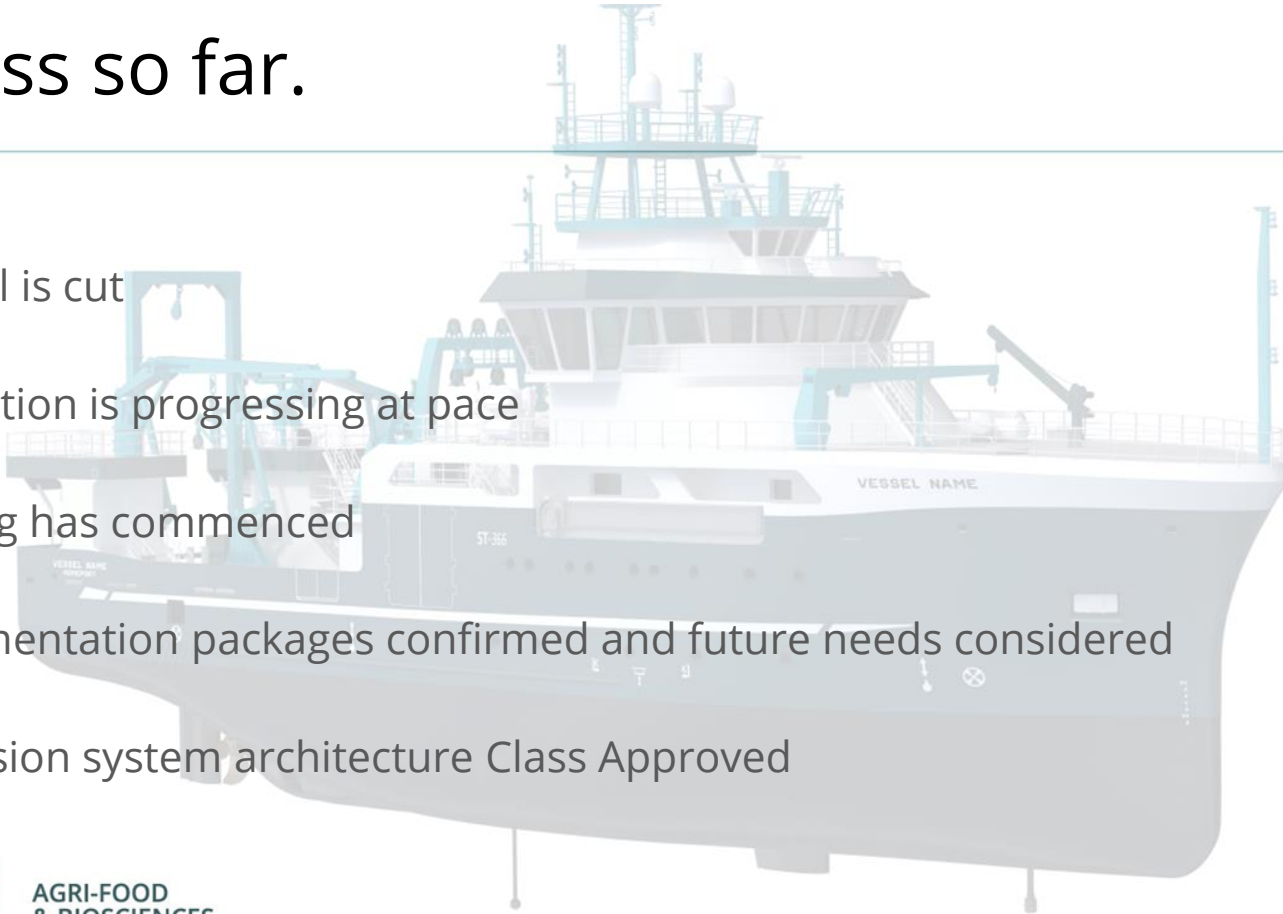
JUNE 2025

afbini.gov.uk



Progress so far.

1. All steel is cut
2. Fabrication is progressing at pace
3. Painting has commenced
4. Instrumentation packages confirmed and future needs considered
5. Propulsion system architecture Class Approved



Steel cut and Fabrication at pace



Steel cut and Fabrication at pace

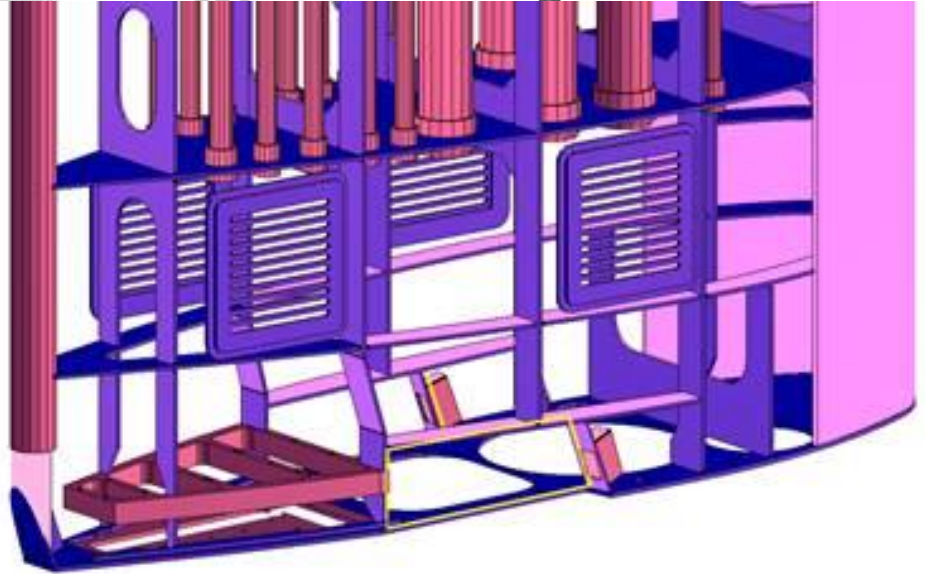


Painting commencement

- Highest quality finish to meet the Northern European climate
- Early engagement with International UK and Spain
- Paint representative on site to ensure warranty
- Painting to continue in parallel with fabrication until launching

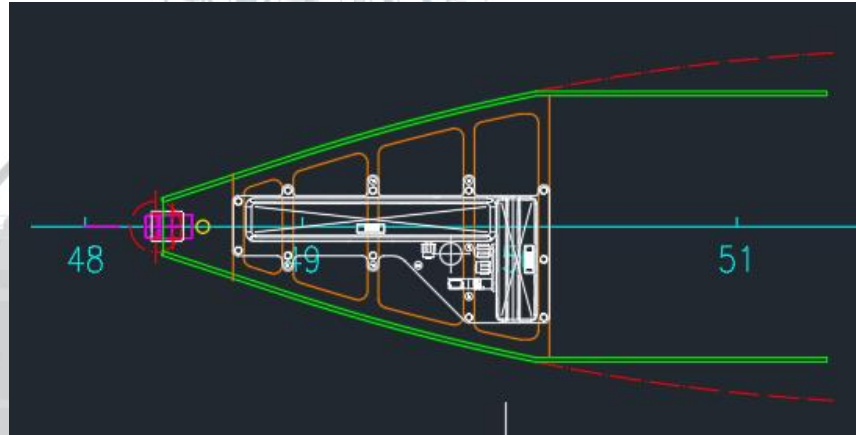
Instrumentation

- Drop keel instrument cluster has been a challenge
- EK 80
- Nortek 100khz ADCP
- EM2042



Instrumentation

- Modified EM2042 mount – AFBI fabricated



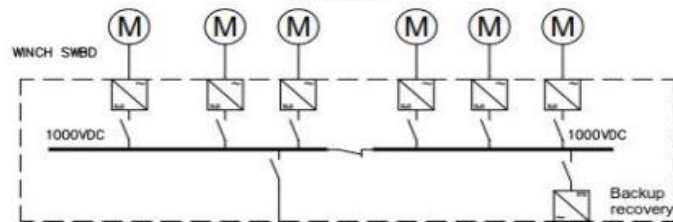
- EM712 and Sub Bottom Profiler foundations installation

Propulsion system

- 'Hybrid' Notation over 'Hybrid +'
- Additional battery capacity a benefit of 'Hybrid' notation
- Vessels underpinning electrical architecture maintained to meet noise and efficiency requirements

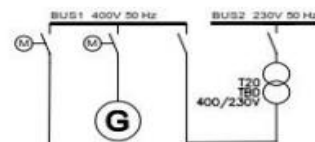
Tbd!
See documentation from
Winch supplier

WINCH MOTORS

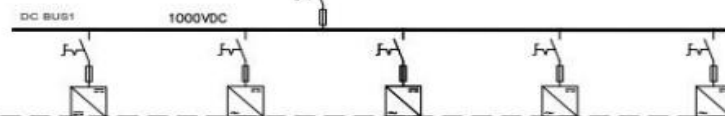


Note 1

EMERGENCY SOURCE OF POWER



MAIN SWITCHBOARD



ESS
Battery
System
1000kW
1500kWh



MAIN
1520kW
690V/
Variable speed



MP
2000kW



STERN
400kW



T1
900kVA
400V



T2
200kVA
400V



120V/60Hz x 2



BOW
680kW



AUX
750kW
400V/50Hz
1500rpm

